
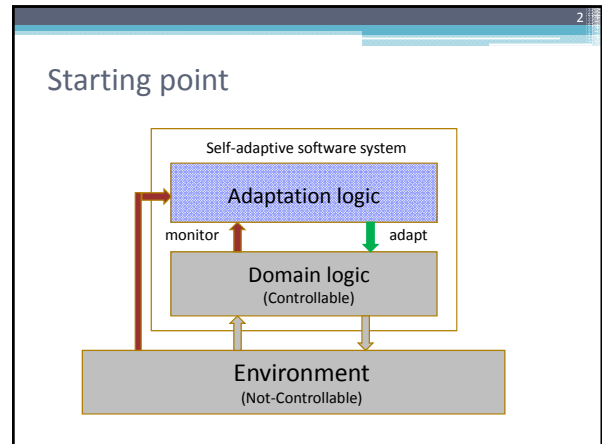
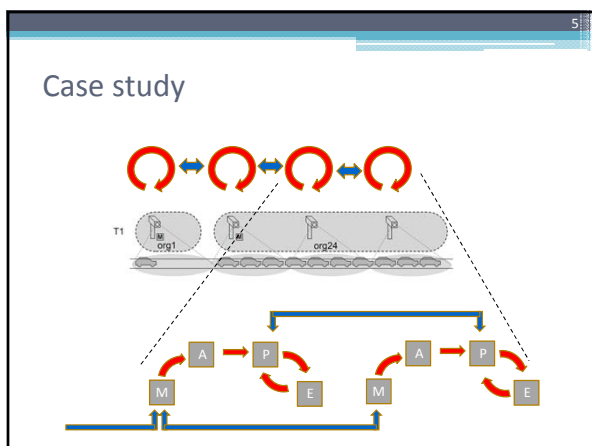
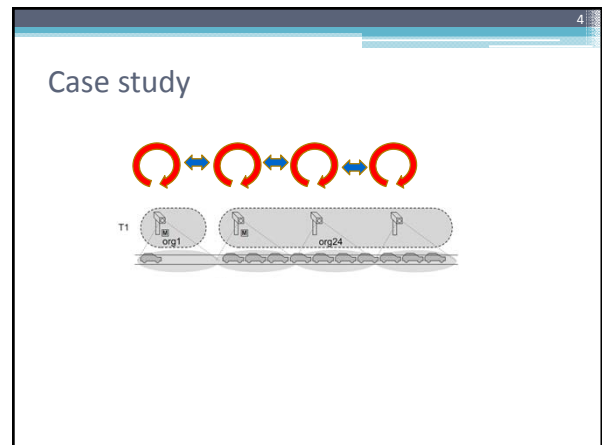


On Interacting Control Loops in Self-Adaptive Systems

Pieter Vromant¹, Danny Weyns², Sam Malek³, Jesper Andersson²
SEAMS 2011, Honolulu

- ## Adaptation logic
- Realized by MAPE loop
 - Need for multiple MAPE loops, e.g.:
 - Manage complexity by separating adaptation concerns
 - Deal with local adaptations only for scalability reasons
 - Adaptations that cross multiple ownership domains



- ## Outlook
- Systematic engineering approach to manage the complexity of interacting control loops
 - Patterns of interacting control loops
 - Intra-loop and inter-loop coordination mechanisms
 - Distribution of MAPE